



B.P. CHALIHA COLLEGE

CRITERIA: 4

Infrastructure and Learning Resources

4.2.1: LIBRARY IS AN AUTOMATED WITH DIGITAL FACILITIES

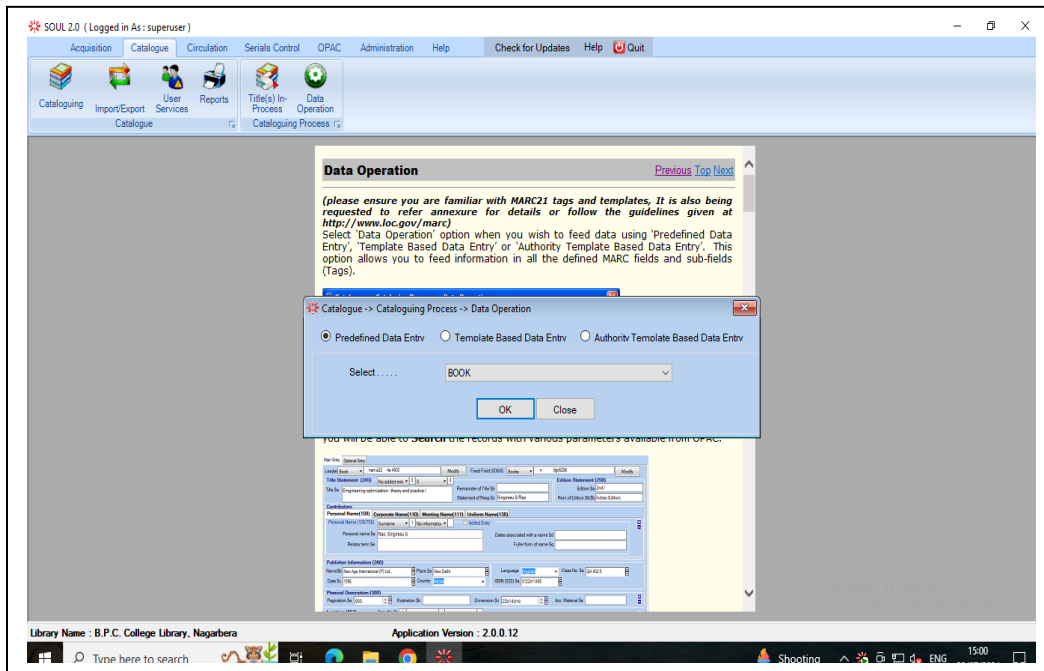


Submitted to

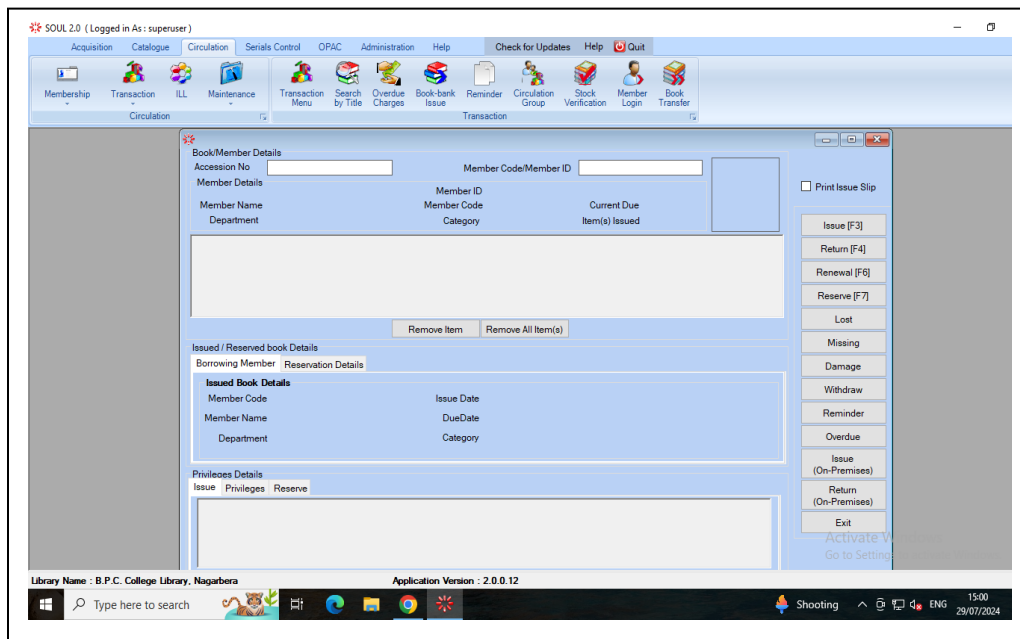


National Assessment and Accreditation Council

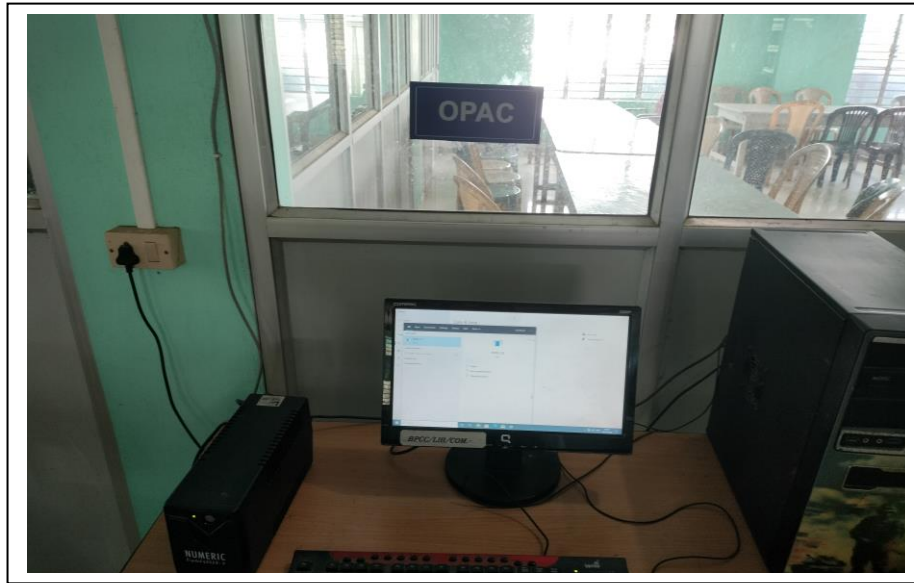
Integrated Library Management Software SOUL2.0 (Cataloguing Module)



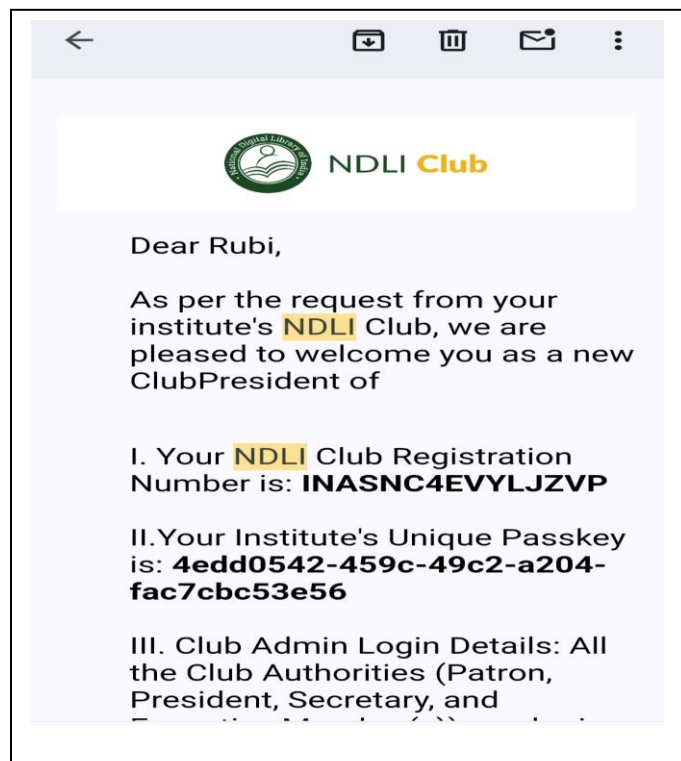
Integrated Library Management Software SOUL2.0 (Circulation Module)



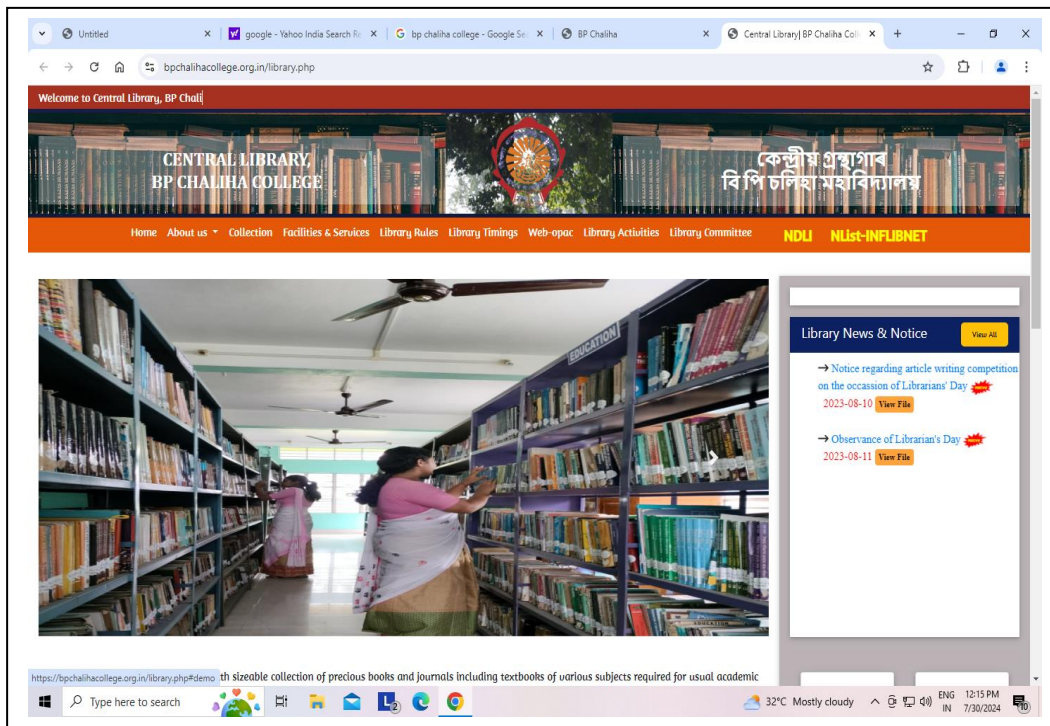
OPAC Station



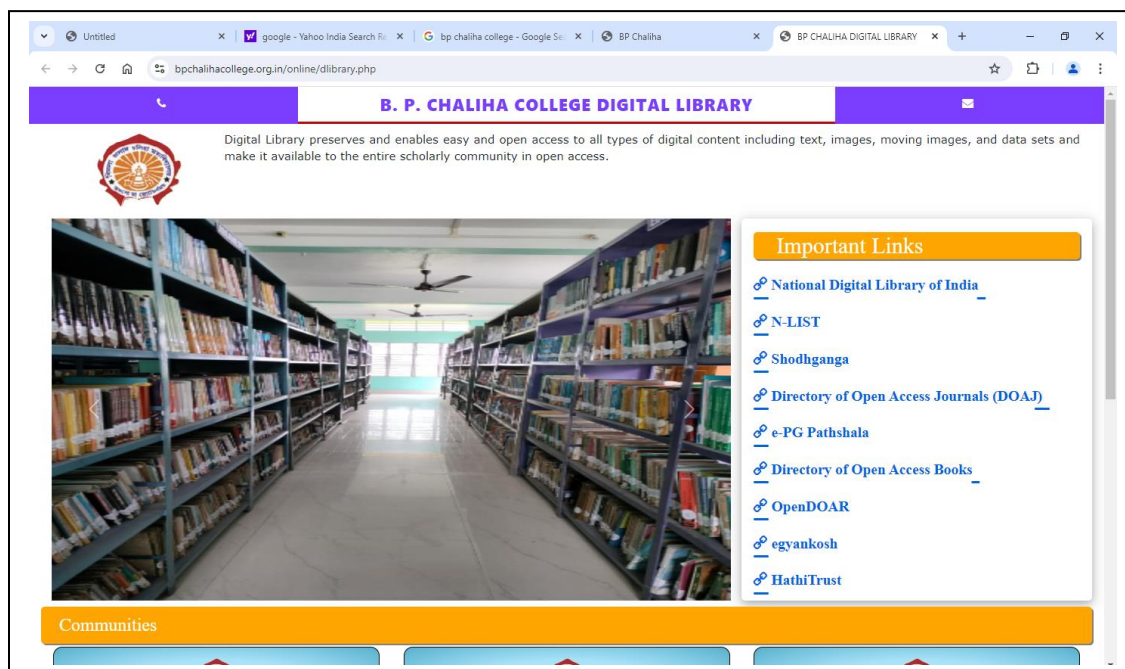
Institutional membership of NDLI Club (Representative Photo)



Library Portal (<https://bpchalihacollege.org.in/library.php>)



Institutional library cum Digital Library (<https://www.bpchalihacollege.org.in/online/dlibrary.php>)



Library Online Feedback Form

(https://bpchalihacollege.org.in/library_feedback.php)

The screenshot shows a web browser window with the URL bpchalihacollege.org.in/library_feedback.php. The page header features a banner for the Central Library of BP Chaliha College, with text in English and Assamese. Below the banner is a navigation menu with links: Home, About us, Collection, Facilities & Services, Library Rules, Library Timings, Web-opac, Library Activities, Library Committee, NDLI, and NLIST-INFLIBNET. The main content area is titled "Library Feedback" and contains a form with the following fields:

- Enter Name *
- Enter Class *
- Enter Email *
- Enter Roll No.
- Enter Academic Session

Below the form, there are two questions:

1. Are you aware about the services of Central Library, B.P. Chaliha College?*
2. Purpose of visit to the library *

The form includes radio buttons for "Yes" and "No" for the first question, and radio buttons for "For Borrowing Books", "For Research/ Reference Purpose", "For Reading Journals", and "For Reading Magazine" for the second question. The browser's taskbar at the bottom shows the system time as 12:16 PM and the date as 24/07/24.

Barcode Printer



Barcode Scanner



TVS dot matrix Printer



Document Printer



(Dr Kamal Ch Pathak)
Principal, B. P. Chaliha College
Principal
B.P. Chaliha College
Nagarbera