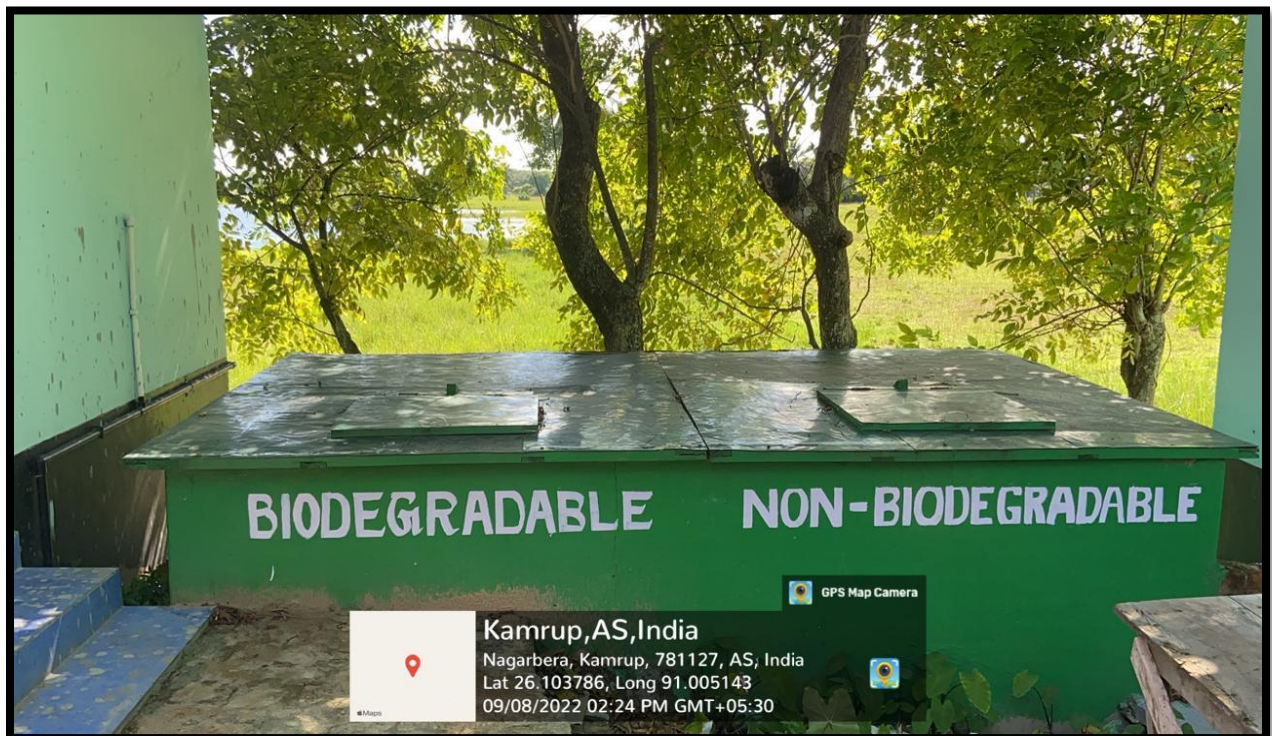


7.1.2 MANAGEMENT OF THE VARIOUS TYPES OF DEGRADABLE AND NON-DEGRADABLE WASTE

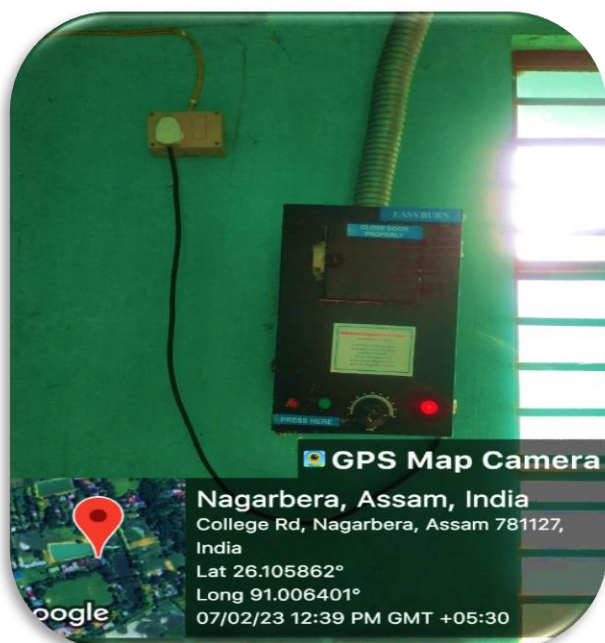
- 1. Management of Solid Waste:** The college systematically collects solid waste, segregating it into wet and dry categories. Waste from all sources, with biodegradable waste being directed to compost pits and vermicomposting units for the production of organic fertilizer and recycling purposes. Non-biodegradable waste generated within the college premises is transferred to designated waste disposal services for proper handling.
- 2. Biomedical Waste Management:** The female hostel is equipped with an incinerator dedicated to safely disposing of sanitary napkins, ensuring the appropriate management of biomedical waste.
- 3. Electronic Waste Management:** Electronic waste is primarily subject to repair procedures. Non-functional electronic components are subsequently collected by Shree computers.
https://bpchalihacollege.org.in/upload/ssr_document/1723553911.pdf
- 4. Waste Recycling System:** Within the college, a vermicomposting unit operates to facilitate the conversion of decomposable waste materials into valuable organic fertilizer.
- 5. Hazardous Chemicals and Radioactive Waste:** Chemicals from the laboratory are disposed of in a separate tank made of brick and charcoal which acts as adsorbent and is dedicated to the disposal of hazardous chemicals. Importantly, the college does not produce any radioactive waste materials.

1. WASTE BIN

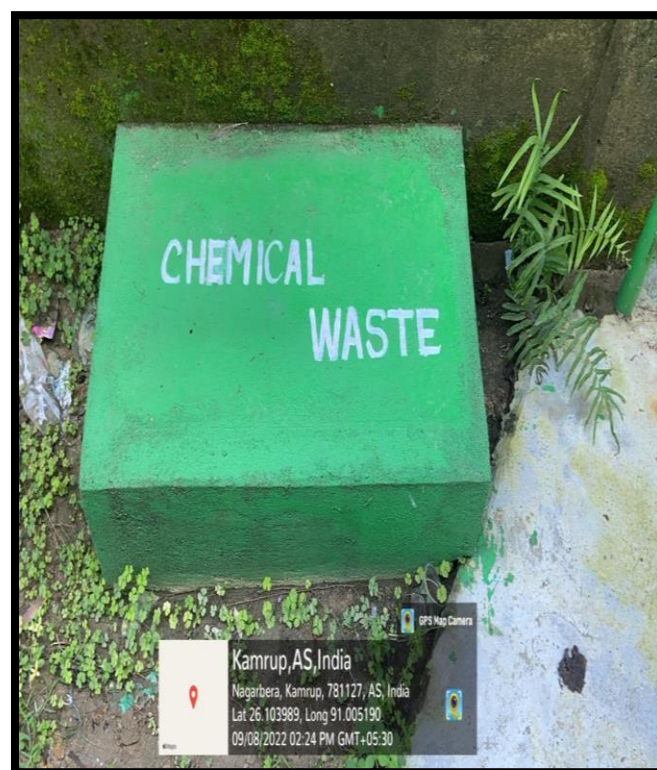




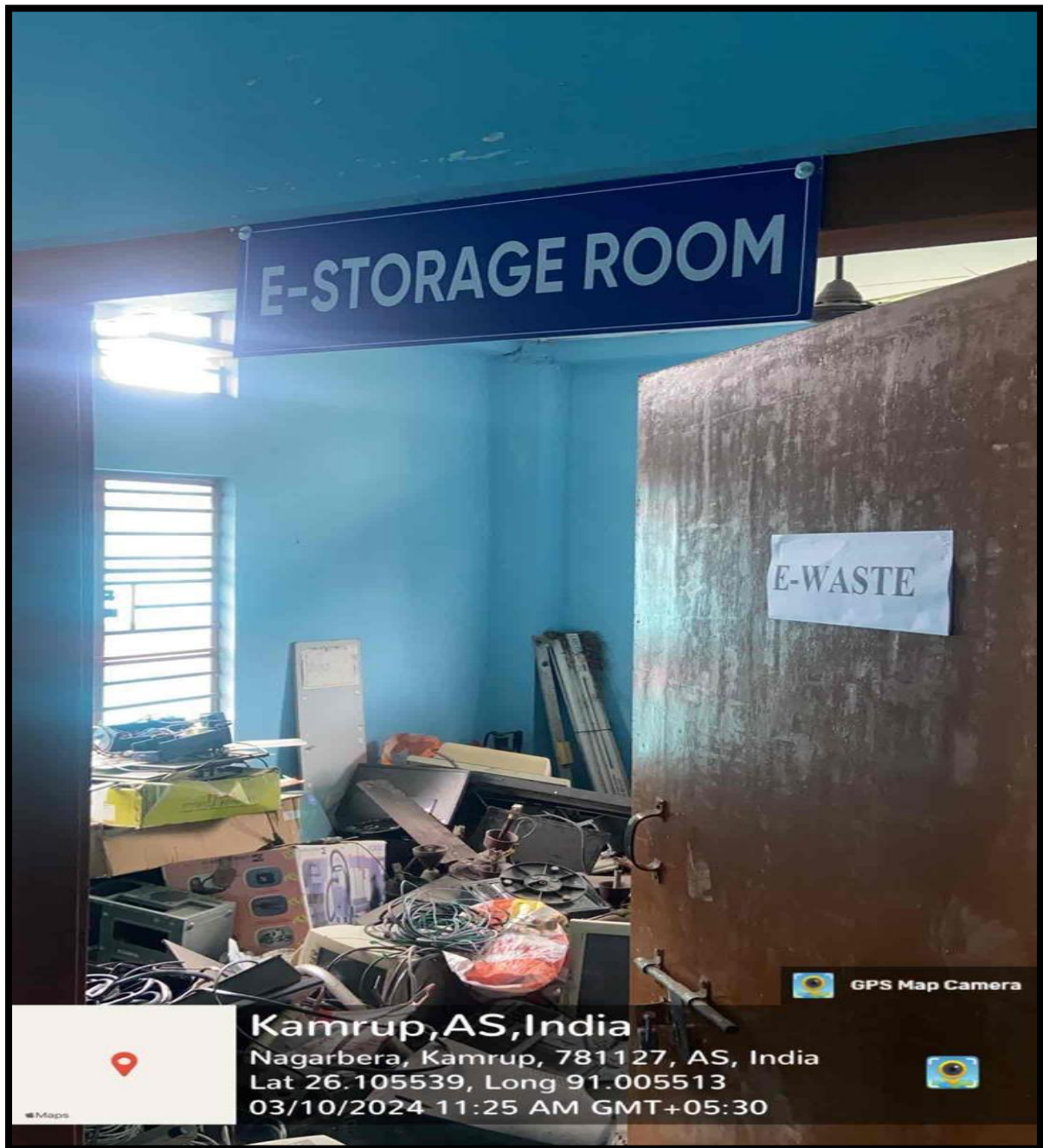
2. INCINERATOR & VENDING MACHINE



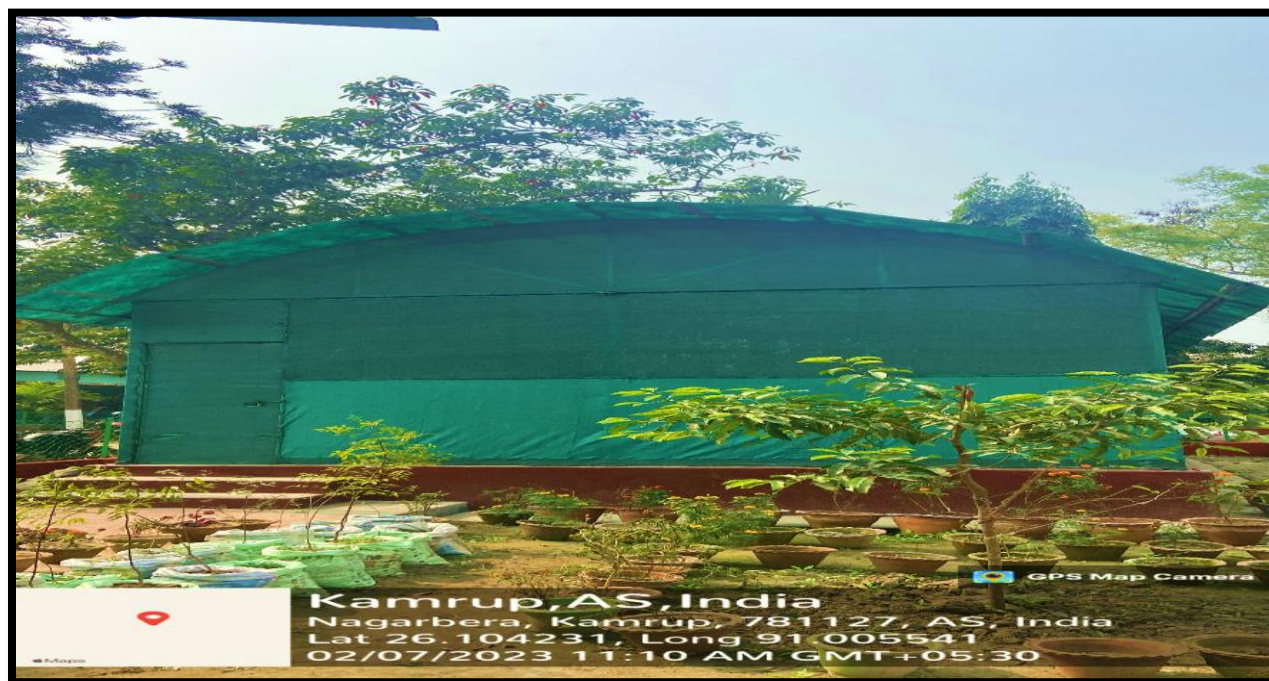
3. HAZARDOUS CHEMICALS MANAGEMENT TANKS:




4. ELECTRONIC WASTE MANAGEMENT



5. WASTE RECYCLING SYSTEM (VERMICOMPOSTING UNIT)



Greenhouse


(Dr Kamal Ch Pathak)
Principal, B. P. Chaliha College
Principal
B.P. Chaliha College,
Nagarbera