



---

# B.P. CHALIHA COLLEGE

---

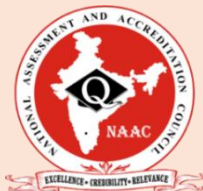
**CRITERIA: 2**

## Teaching learning and evaluation

**2.6.2: Attainment of POs and COs**



Submitted to



**National Assessment and Accreditation Council**

In the realm of higher education, the systematic evaluation of Programme Outcomes (POs) and Course Outcomes (COs) is a cornerstone of academic excellence and continuous improvement. This process is not only aligns with accreditation standards but also ensures that the educational offerings meet the evolving demands of the industry and society.

### **Defining Programme Outcome and Course Outcomes**

**Programme Outcomes** are overarching statements that articulate the knowledge, skills, and attitudes that students are expected to possess upon completing a degree program.

**Course Outcomes** are more granular, detailing the specific abilities that students should acquire through individual courses.

### **The Evaluation Mechanism**

B P Chaliha College employs a variety of methods to evaluate the attainment of POs and COs:

- **Direct Assessments:** These include examinations, projects, and practicals that directly measure students' competencies against the COs and, by extension, the POs.
- **Indirect Assessments:** Surveys, feedback, and alumni testimonials offer insights into the long-term impact of the education on students' careers and personal development.

### **The Process of Evaluation**

1. **Articulation:** The CO and PO of each course is uploaded in college website.
2. **Mapping:** Establishing a relationship between COs and POs to ensure curriculum relevance.
3. **Assessment Design:** Creating tools and rubrics for objective measurement of outcomes.  
The course outcomes, program outcomes and program specific outcomes are measured through the results of end semester exams. It follows mainly two rubrics: qualitative and quantitative.
4. **Data Collection:** Gathering evidence of student work to evaluate against the outcomes.
5. **Analysis:** Analyzing the data to determine the level of outcome attainment.

### PO and PSO:

To analyze the data quantitatively and qualitatively we use the following two rubrics. In rubric 1 data has been analyzed quantitatively to find the performance of program outcome. Similarly rubric 2 has been used to analyze the data qualitatively. To find the PO quantitatively pass percentage of the students has been categorized as per rubric 1. In rubric 2 qualitative measure has been taken as percentage of marks obtained by the students in their final examination and it has been categorized in 5 point scale from low to high.

#### Rubric 1: Quantitative measure

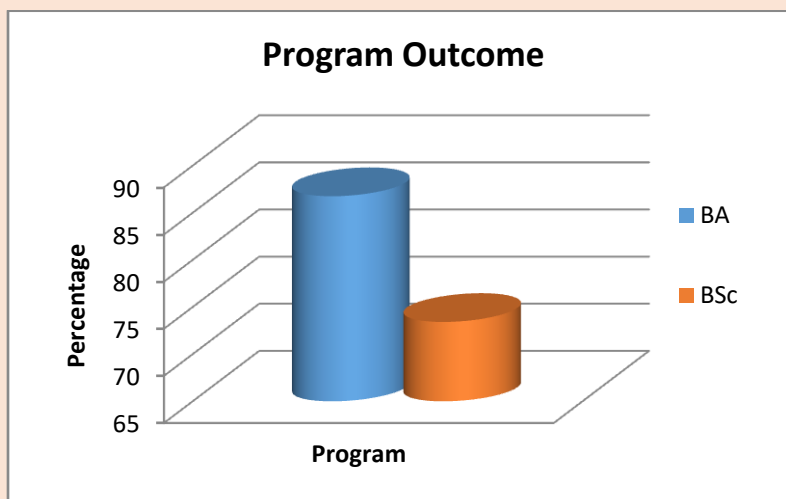
Category	Unsatisfactory	Competent	Proficient	Distinguished	Target
Program	<70%	70-80%	80-90%	90-100%	100%

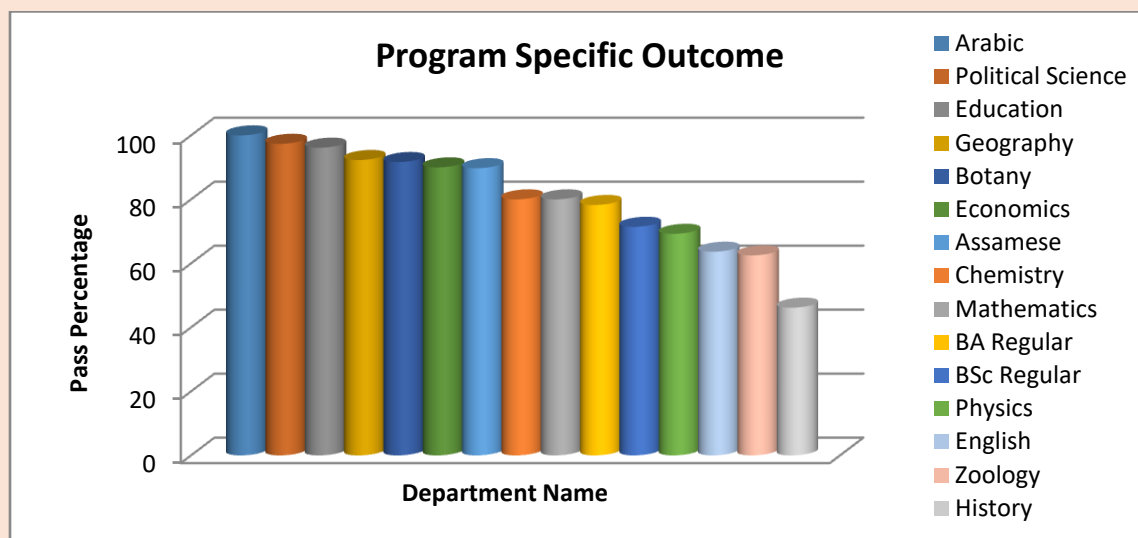
#### Rubric 2: Qualitative measure

Category	Low	Moderate	Progressed	Developed	High
Program	40-50%	50- 60%	60- 70%	70- 80%	>=80%

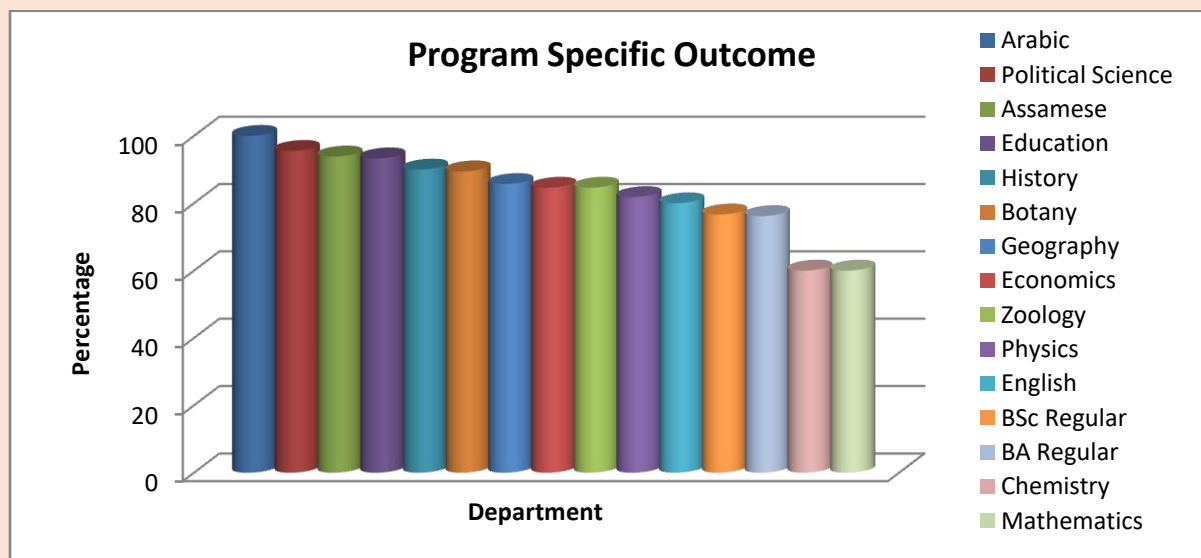
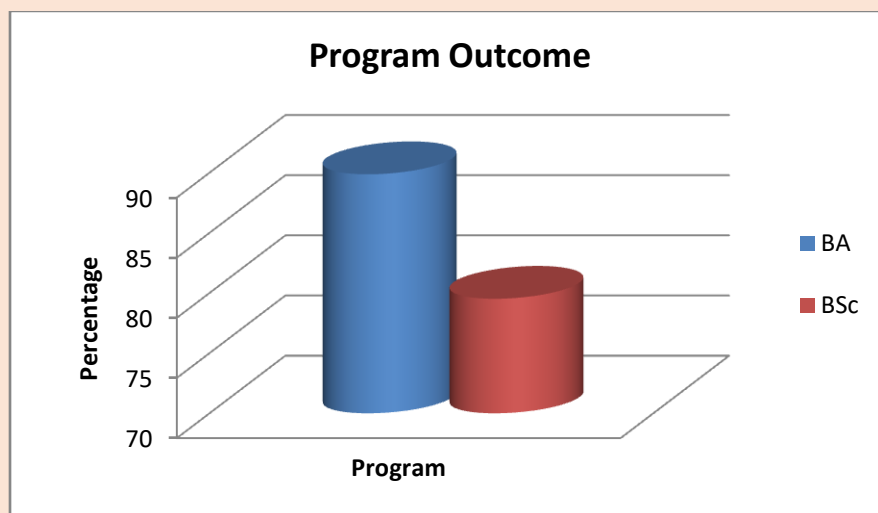
Using these two rubrics data has been represented in tabular form as well as graphically for the three undergraduate courses and for each program separately. PO and PSO has been evaluated for the year 2018-19 to 2022-23 separately for each year.

PO and PSO for the year 2018-19

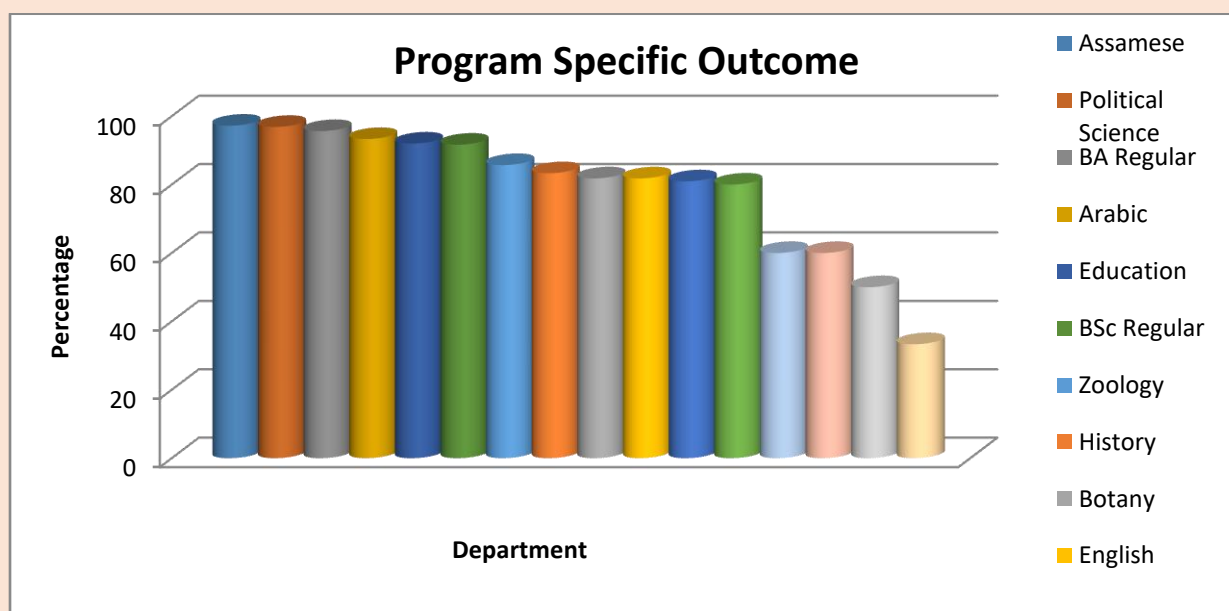
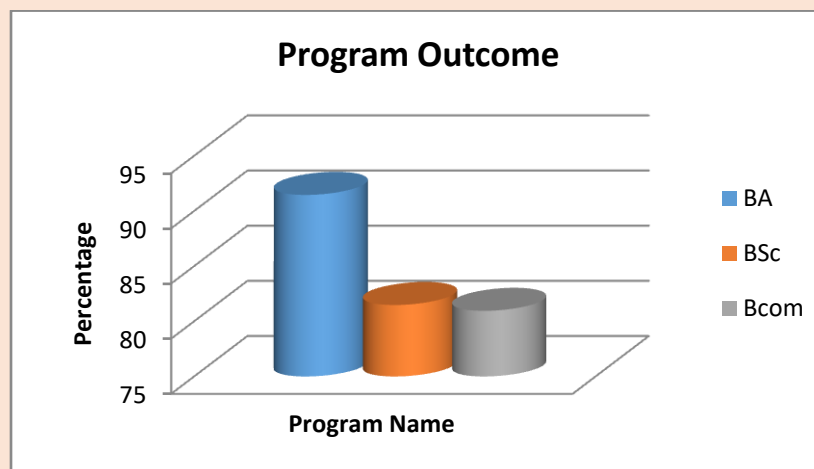




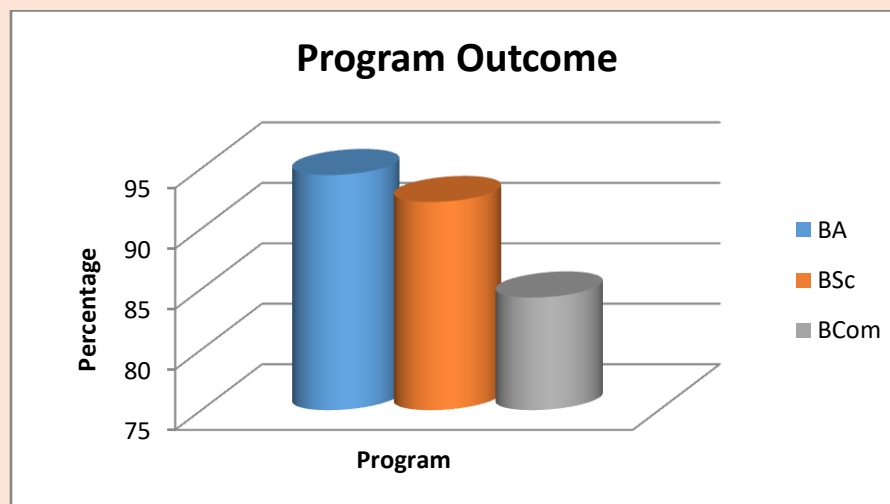
PO and PSO for the year 2019 – 20

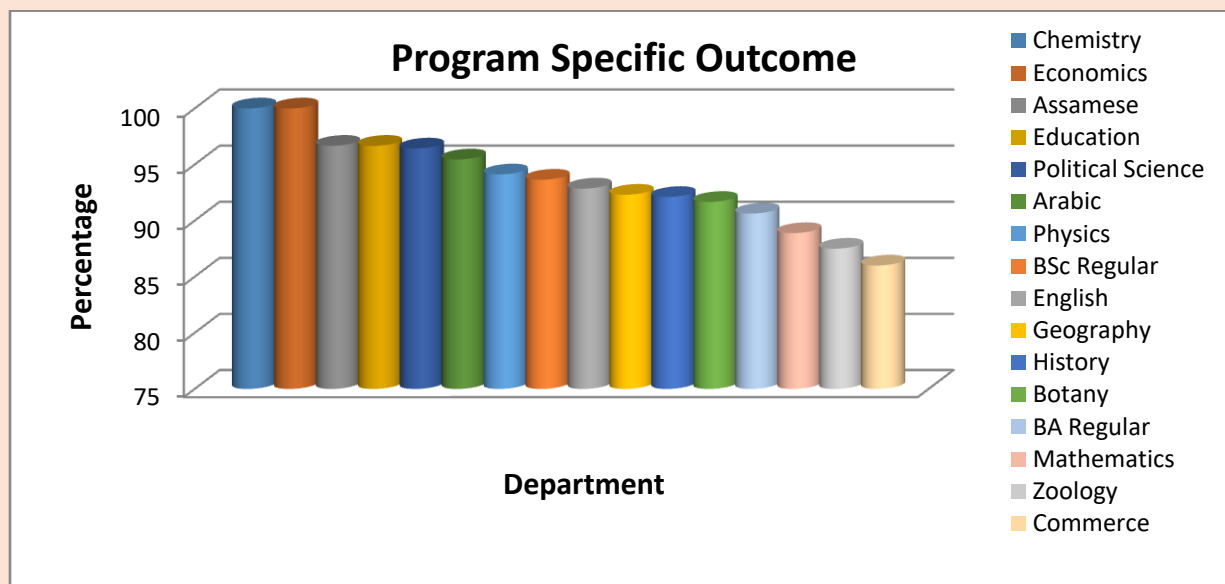


PO and PSO for the year 2020 – 21

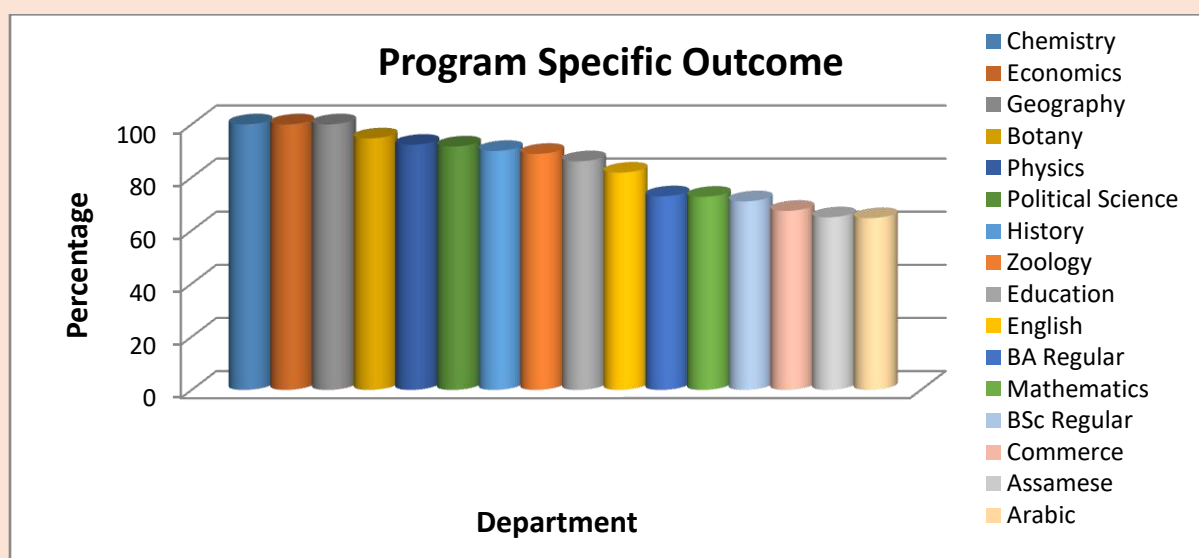
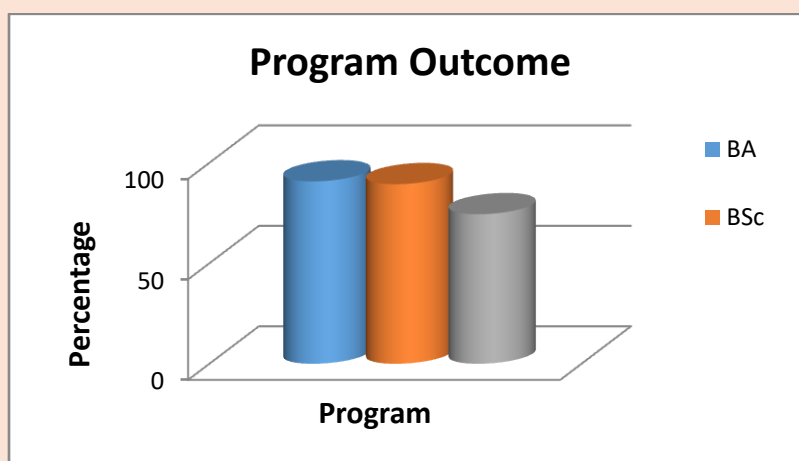


PO and PSO for the year 2021 – 22





PO and PSO for the year 2022 – 23



## CO:

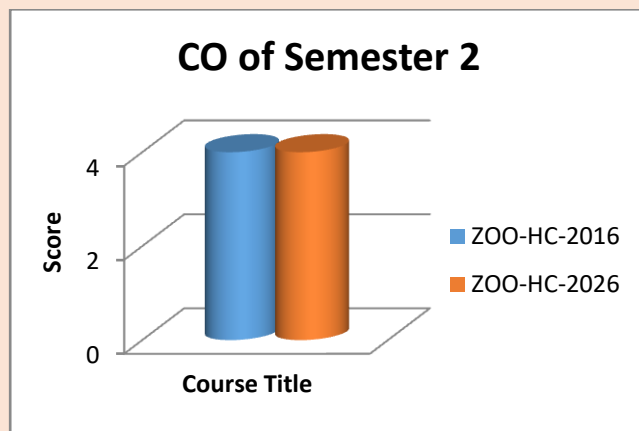
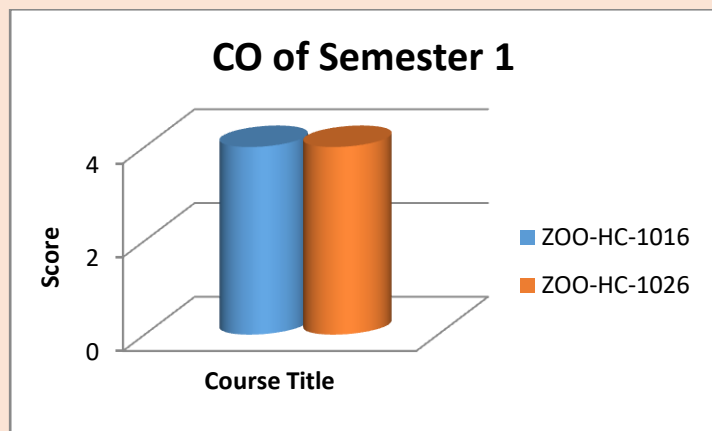
Here we evaluate the attainment of each course separately at two different levels. One is for each academic time period for which final examination is conducted and the other one is for each course of that time period for which the students appeared for the final examination. For the first level attainment of CO has been evaluated using the following 5 point scale.

Scale		Percentage
0	LOW	40 - 50%
1	MODERATE	50 - 60%
2	HIGH	60 - 70%
3	PROFICIENT	70 - 80%
4	TARGET	80 % +

And for the attainment of CO for individual course of study separately, number of students has been identified under the following categories of percentage. Finally this data has been represented graphically and outcome can be observed quantitatively for each offered courses separately.

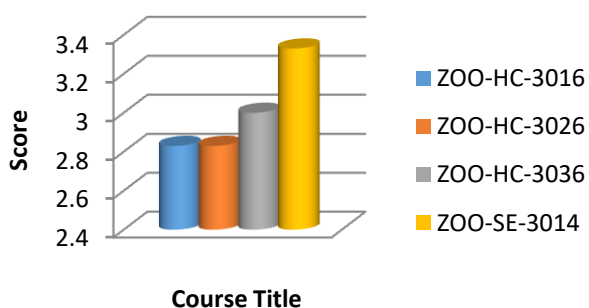
Course Name	40-50%	50-60%	60-70%	70-80%	>=80%

Attainment of course outcome for the year 2022 – 23 (here representation is given for one program only)

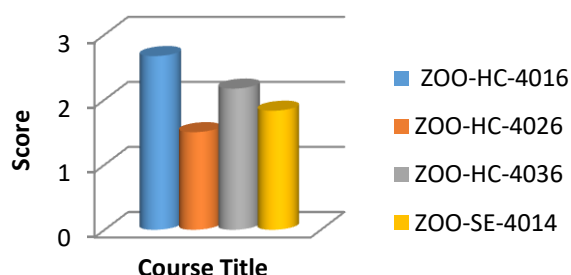




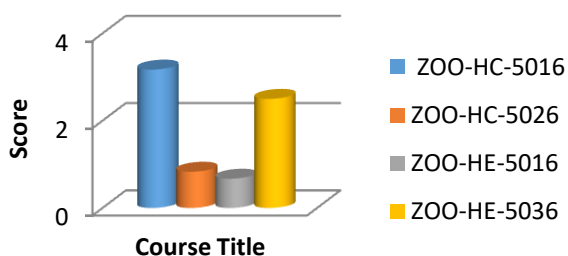
### CO of Semester 3



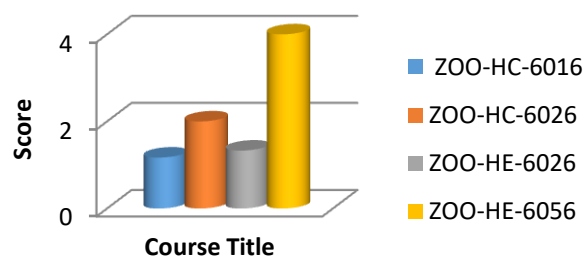
### CO of Semester 4



### CO of Semester 5



### CO of Semester 6



## Conclusion

From the analysis it has been observed that the institute has continuously progressed in achieving the attainment of program outcome (PO) and program specific outcome (PSO) during these last five years. But at the same we have to work for achieving the target of 100% attainment in quantitative analysis. Considering the qualitative rubric it has been observed that most of the programs have average performance.

Considering attainment of CO it has been observed that we have reached the target level for the first two semesters. But at the later part it is required to take some measures for each course to retain in the target level.

Finally, it can be concluded that the evaluation of POs and COs is an integral part of the educational process, reflecting an institution's commitment to delivering high-quality education and fostering an environment of lifelong learning. Through this rigorous evaluation, institutions can ensure that their graduates are well-equipped to meet the challenges of the professional world.



## PO and PSO

Year	PO and PSO attainment Link
2022-23	<a href="https://bpchalihacollege.org.in/upload/academic_file/1723631110.pdf">https://bpchalihacollege.org.in/upload/academic_file/1723631110.pdf</a>
2021-22	<a href="https://bpchalihacollege.org.in/upload/academic_file/1723631088.pdf">https://bpchalihacollege.org.in/upload/academic_file/1723631088.pdf</a>
2020-21	<a href="https://bpchalihacollege.org.in/upload/academic_file/1723631023.pdf">https://bpchalihacollege.org.in/upload/academic_file/1723631023.pdf</a>
2019-20	<a href="https://bpchalihacollege.org.in/upload/academic_file/1723630923.pdf">https://bpchalihacollege.org.in/upload/academic_file/1723630923.pdf</a>
2018-19	<a href="https://bpchalihacollege.org.in/upload/academic_file/1723630825.pdf">https://bpchalihacollege.org.in/upload/academic_file/1723630825.pdf</a>

## Course Outcome attainment (2022-2023)

Department	Course Outcome attainment Links
Assamese	<a href="https://bpchalihacollege.org.in/upload/result_analysis/1722263296.pdf">https://bpchalihacollege.org.in/upload/result_analysis/1722263296.pdf</a>
Botany	<a href="https://bpchalihacollege.org.in/upload/result_analysis/1721641705.pdf">https://bpchalihacollege.org.in/upload/result_analysis/1721641705.pdf</a>
Chemistry	<a href="https://bpchalihacollege.org.in/upload/result_analysis/1721667276.pdf">https://bpchalihacollege.org.in/upload/result_analysis/1721667276.pdf</a>
Commerce	<a href="https://bpchalihacollege.org.in/upload/result_analysis/1721625809.pdf">https://bpchalihacollege.org.in/upload/result_analysis/1721625809.pdf</a>
Education	<a href="https://bpchalihacollege.org.in/upload/result_analysis/1721658017.pdf">https://bpchalihacollege.org.in/upload/result_analysis/1721658017.pdf</a>
Economics	<a href="https://bpchalihacollege.org.in/upload/result_analysis/1721914756.pdf">https://bpchalihacollege.org.in/upload/result_analysis/1721914756.pdf</a>
English	<a href="https://bpchalihacollege.org.in/upload/result_analysis/1721666565.pdf">https://bpchalihacollege.org.in/upload/result_analysis/1721666565.pdf</a>
Geography	<a href="https://bpchalihacollege.org.in/upload/result_analysis/1721655149.pdf">https://bpchalihacollege.org.in/upload/result_analysis/1721655149.pdf</a>
History	<a href="https://bpchalihacollege.org.in/upload/result_analysis/1721633179.pdf">https://bpchalihacollege.org.in/upload/result_analysis/1721633179.pdf</a>
Mathematics	<a href="https://bpchalihacollege.org.in/upload/result_analysis/1718967466.pdf">https://bpchalihacollege.org.in/upload/result_analysis/1718967466.pdf</a>
Physics	<a href="https://bpchalihacollege.org.in/upload/result_analysis/1721497377.pdf">https://bpchalihacollege.org.in/upload/result_analysis/1721497377.pdf</a>
Political Science	<a href="https://bpchalihacollege.org.in/upload/result_analysis/1721582723.pdf">https://bpchalihacollege.org.in/upload/result_analysis/1721582723.pdf</a>
Statistics	<a href="https://bpchalihacollege.org.in/upload/result_analysis/1722263348.pdf">https://bpchalihacollege.org.in/upload/result_analysis/1722263348.pdf</a>
Zoology	<a href="https://bpchalihacollege.org.in/upload/result_analysis/1721570004.pdf">https://bpchalihacollege.org.in/upload/result_analysis/1721570004.pdf</a>