

Program outcome (PO) attainment
Program specific outcome (PSO) attainment
Year: 2022-2023

Attainment of Program Outcome:

During the year 2022 – 23 program outcome of three undergraduate courses is given in the following Table 1, Table 2 and Figure 1.

Table: 1

Program	BA	BSc	BCom
Pass percentage	90.76	89.36	74.41

Table: 2

Category	Unsatisfactory <70%	Competent 70- 80%	Proficient 80- 90%	Distinguished 90- 100%	Target 100%
BA				✓	
BSc			✓		
BCom		✓			

It has been observed from the following figure that none of the programs have unsatisfactory performance. Although we are able to reach distinguished level but yet to reach the target of 100% attainment.

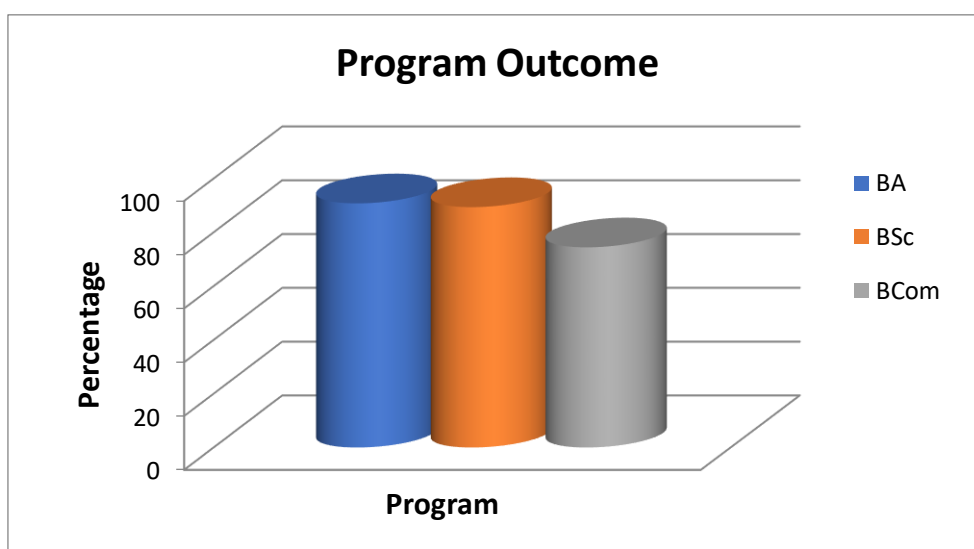


Figure 1

Attainment of Program Specific Outcome

Rubric 1: Quantitative measure of PO and PSO

For the year 2022 – 23 program specific outcome in terms of pass percentage is given in the following table (Table 3).

Table: 3

Department	Pass percentage
Arabic	64.70
Assamese	65
Botany	94.74
Chemistry	100
Commerce	74.41
Education	86.11
Economics	100
English	81.82
Geography	100
History	90
Mathematics	72.73
Physics	92.31
Political Science	91.67
Zoology	88.89
BA Regular	72.91
BSc Regular	71.02

Table: 4

Category	Unsatisfactory <70%	Competent 70- 80%	Proficient 80- 90%	Distinguished 90- 100%	Target 100%
Assamese				✓	
Arabic	✓				
Botany				✓	
Chemistry					✓
Commerce		✓			
Education				✓	
Economics					✓
English			✓		
Geography					✓
History				✓	
Mathematics		✓			
Physics				✓	
Political Science				✓	
Zoology			✓		
BA Regular		✓			
BSc Regular		✓			

The PSOs for all the programs can be seen from the above table as well as the following figure. It has been observed that compared to the previous years a few programs have achieved the target performance and only one program is at unsatisfactory level.

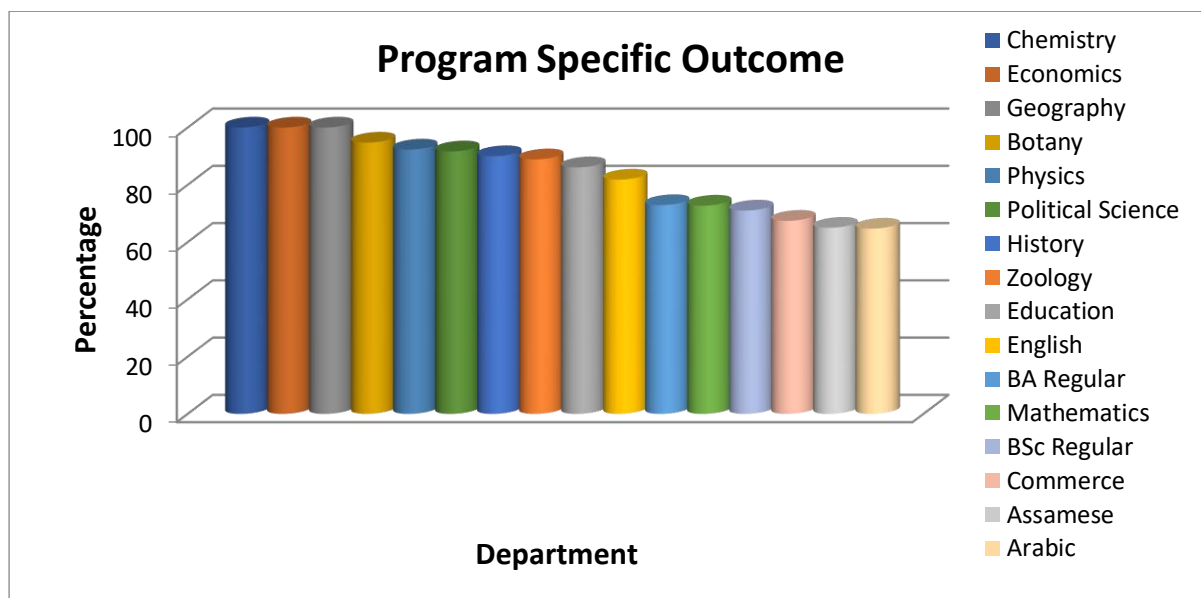


Figure 2

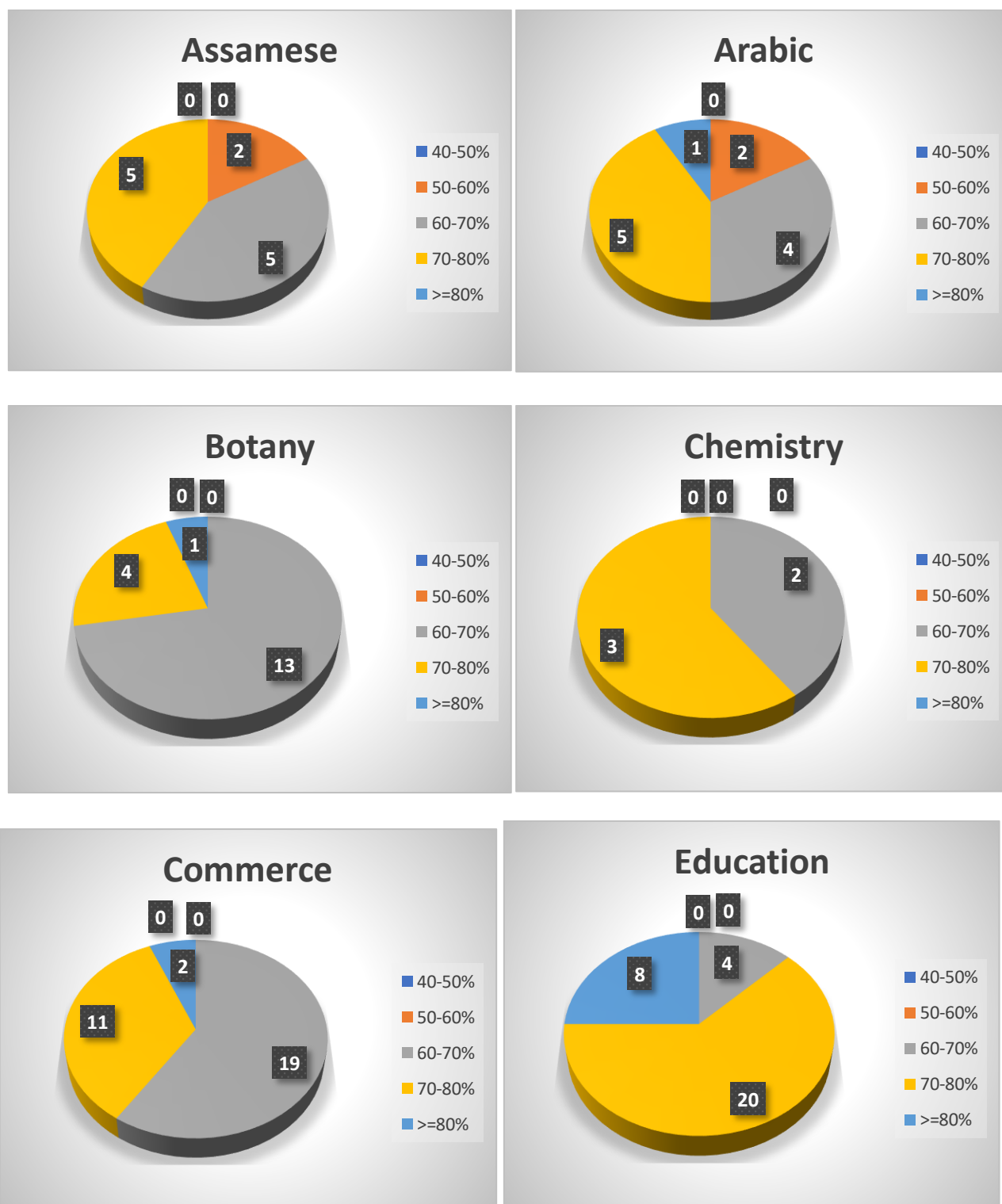
Rubric 2: Qualitative measure of PO and PSO

In this rubric the number of students in each category (percentage wise) is calculated and given in the following table (Table 5). The division of students in different category shows moderate performance for the respective subjects.

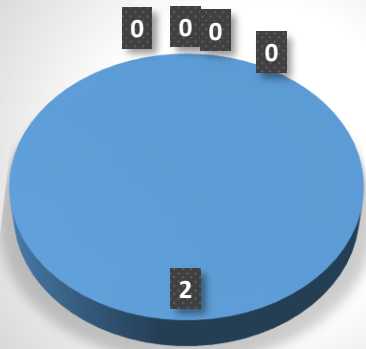
Table: 5

Department	No of students obtained marks (percentage)				
	40-50%	50-60%	60-70%	70-80%	>=80%
Arabic	0	2	4	5	1
Assamese	0	2	5	5	0
Botany	0	0	13	4	1
Chemistry	0	0	2	3	0
Commerce	0	0	19	11	2
Education	0	0	4	20	8
Economics	0	0	2	0	0
English	0	0	5	5	0
Geography	0	0	6	3	0
History	0	0	6	3	0
Mathematics	0	0	3	2	0
Physics	0	0	6	7	0
Political Science	0	4	17	17	6
Zoology	0	0	4	4	0

This qualitative measure of program specific outcome has been represented in the following figures:

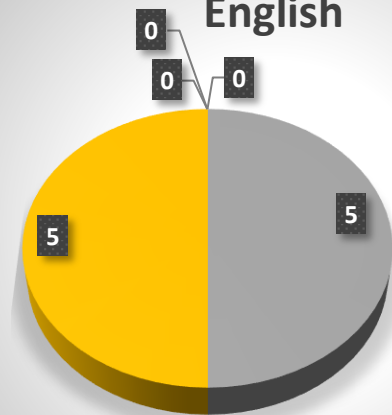


Economics



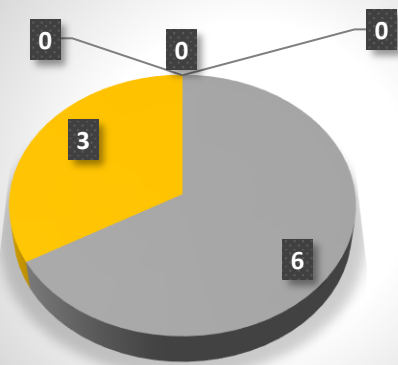
- 40-50%
- 50-60%
- 60-70%
- 70-80%
- >=80%

English



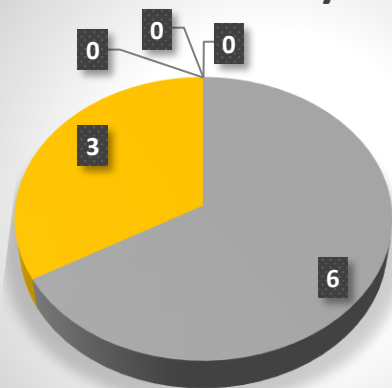
- 40-50%
- 50-60%
- 60-70%
- 70-80%
- >=80%

Geography



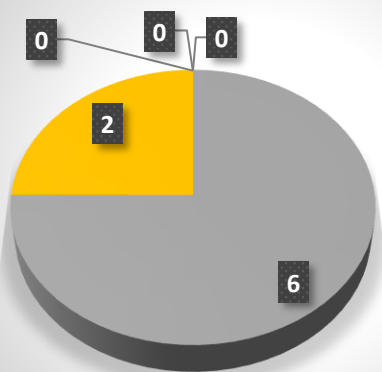
- 40-50%
- 50-60%
- 60-70%
- 70-80%
- >=80%

History



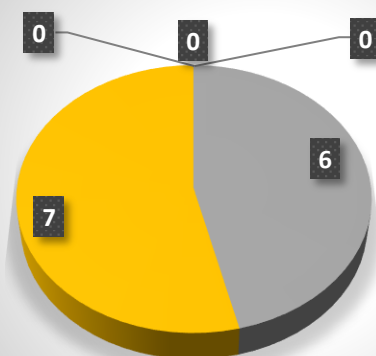
- 40-50%
- 50-60%
- 60-70%
- 70-80%
- >=80%

Mathematics



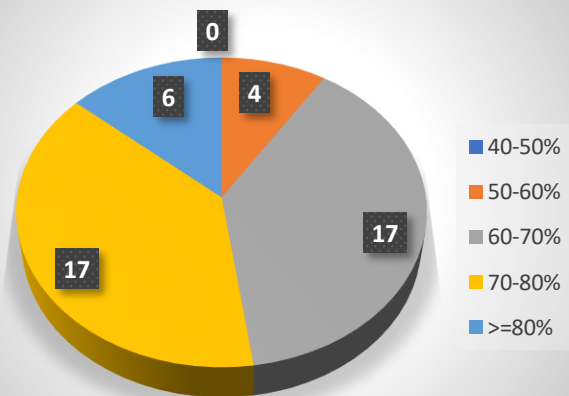
- 40-50%
- 50-60%
- 60-70%
- 70-80%
- >=80%

Physics



- 40-50%
- 50-60%
- 60-70%
- 70-80%
- >=80%

Political Science



Zoology

